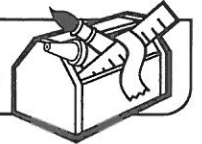
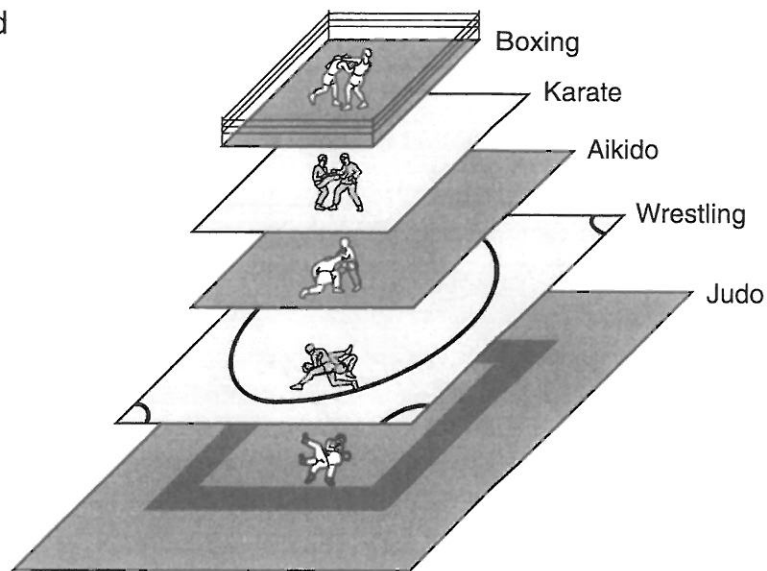


**PROJECT
6****Playing Areas for Five Contact Sports**

Use your calculator to find each playing area.

Scale:

1 mm (drawing)
represents 1 ft (actual)



Sport	Dimensions	Playing Area
Boxing	20 ft by 20 ft	ft ²
Karate	26 ft by 26 ft	ft ²
Aikido	29 ft 6 in. by 29 ft 6 in.*	ft ²
Wrestling	39 ft 3 in. by 39 ft 3 in.*	ft ²
Judo	52 ft 6 in. by 52 ft 6 in.*	ft ²

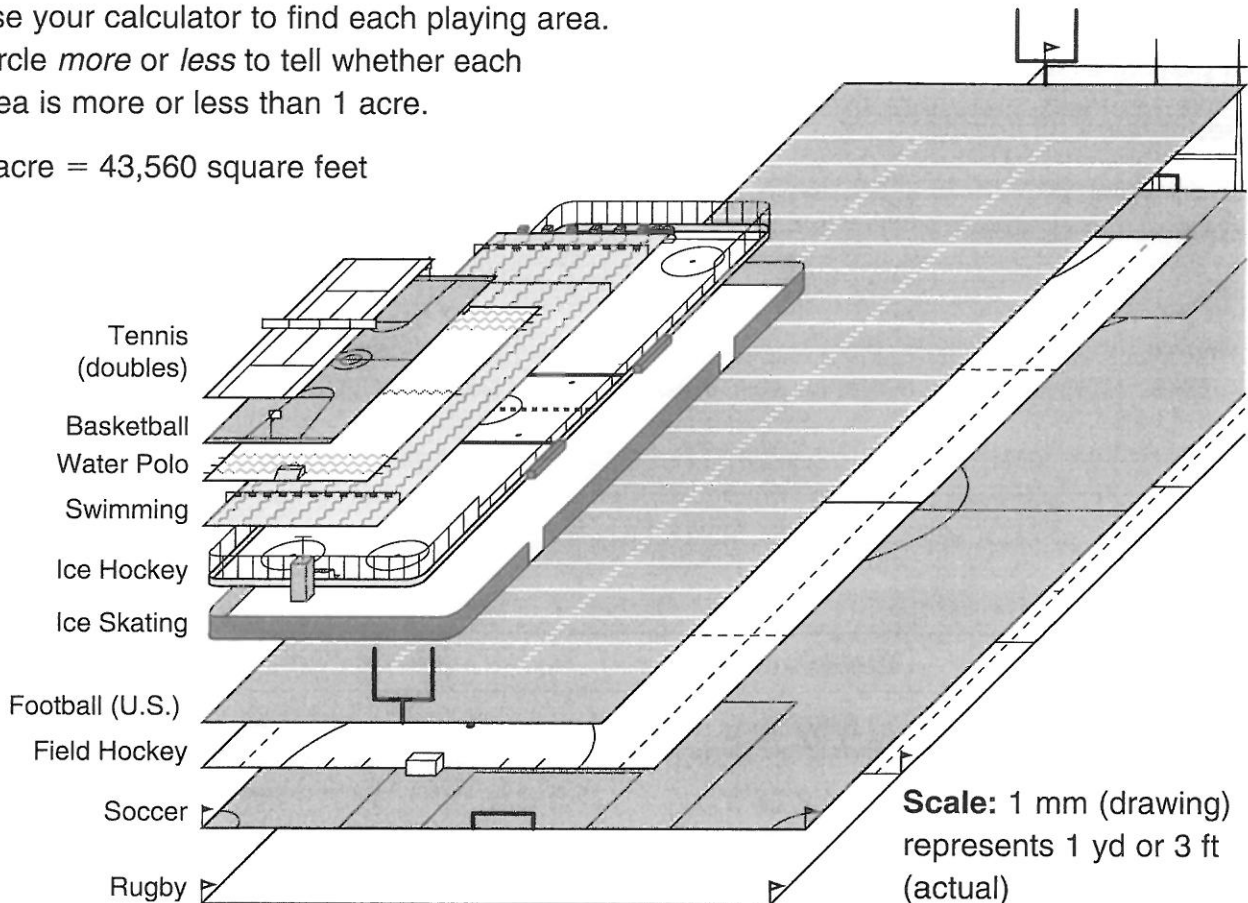
*Calculate with decimals. For example, 29 ft 6 in. is equal to 29.5 ft.

Source: *COMPARISONS* by the Diagram Group. Reprinted by permission of St. Martin's Press.

**PROJECT
6****Playing Areas for Other Sports**

Use your calculator to find each playing area.
Circle *more* or *less* to tell whether each
area is more or less than 1 acre.

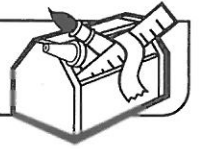
1 acre = 43,560 square feet



Sport	Dimensions	Playing Area	More or Less than 1 Acre?
Tennis (doubles)	78 ft by 36 ft	ft ²	more less
Basketball	94 ft by 50 ft	ft ²	more less
Water Polo	98 ft by 65 ft	ft ²	more less
Swimming	165 ft by 69 ft	ft ²	more less
Ice Hockey	200 ft by 85 ft	ft ²	more less
Ice Skating	200 ft by 100 ft	ft ²	more less
Football (U.S.)	300 ft by 160 ft*	ft ²	more less
Field Hockey	300 ft by 180 ft	ft ²	more less
Soccer	360 ft by 240 ft	ft ²	more less
Rugby	472 ft by 226 ft	ft ²	more less

*Not including end zones

Source: *COMPARISONS* by the Diagram Group. Reprinted by permission of St. Martin's Press.

**PROJECT
6****Ground Areas of Famous Large Buildings**

The ground areas of buildings, their footprints, are almost always given in square feet or square meters. Some buildings have very large ground areas. When their areas are given in square feet, the numbers are so large that it is hard to imagine how big the buildings really are.

For large buildings, if you convert the area in square feet to an estimate in acres, you can get a better idea of the size of the building.

Estimate the ground area, in acres, of each building in the table below:

Example: The Colosseum, in Italy, covers an area of about 250,000 ft².

One acre is about 50,000 ft².

So 5 acres is about 250,000 ft².

The Colosseum covers an area of about 5 acres (5 football fields).

Reference

1 acre = 43,560 square feet

For estimating, think of 1 acre as about 50,000 square feet.

A football field (excluding the end zones) is approximately 1 acre.



Building	Country	Date Built	Ground Area (ft ²)	Estimated Area (in acres)
Colosseum	Italy	70–224	250,000 ft ²	5 acres
Pyramid of Cheops	Egypt	c. 2600 B.C.	571,500 ft ²	acres
Chartres Cathedral	France	1194–1514	60,000 ft ²	acres
St. Peter's Basilica	Vatican City	1506–1626	392,300 ft ²	acres
Taj Mahal	India	1636–1653	78,000 ft ²	acres
Pentagon	U.S. (Virginia)	1941–1943	1,263,000 ft ²	acres
Ford Parts Center	U.S. (Michigan)	1936	2,800,000 ft ²	acres